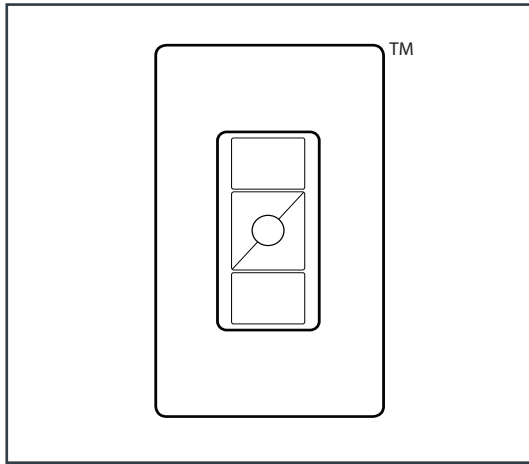


WIRELESS SWITCH WALLPLATE

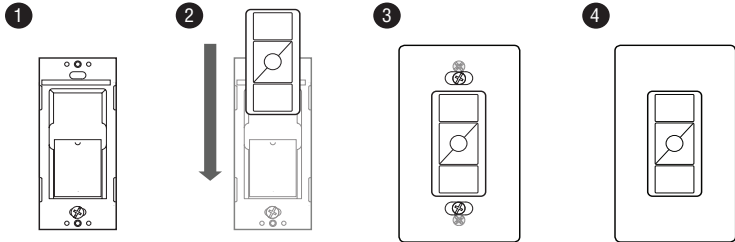


WIRELESS SWITCH WALL MOUNTING ACCESSORIES

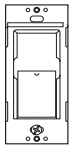
If mounting multiple switches, you will need a wallbox adaptor for each switch. Wallplates can hold 1–4 switches. The 3 button wireless switch can be purchased with a wall mounting kit (see ALWS specsheet, catalog number: ALWS-3B-XX-KIT) which includes a wallbox adaptor and a wallplate.

Fits all wireless switches: ALWS-2B, ALWS-3B, ALWS-4B2S, ALWS-4S, ALWS-4B2G

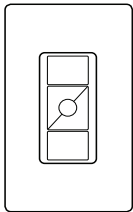
MOUNTING INSTRUCTIONS



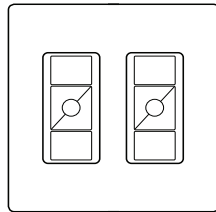
ACCESSORY DRAWINGS (Switches sold separately)



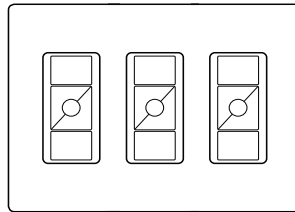
Wallbox adaptor
WB-ADAPT



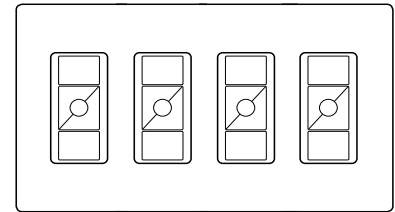
1 gang wallplate
WP-1-WHT



2 gang wallplate
WP-2-WHT



3 gang wallplate
WP-3-WHT



4 gang wallplate
WP-4-WHT

WALL MOUNTING ACCESSORY ORDERING INFORMATION

All wallplates are available in White (WHT), Ivory (IV), and Light Almond (LA). Example: 624124WHT or WP-1-WHT

PART NO.	CATALOG NO.	DESCRIPTION	SWITCH CAPACITY	WALLBOX # NEEDED
624123	WB-ADAPT	Wallbox Adaptor	1	
624124WHT	WP-1-WHT	Wallplate 1 Gang in White	1	1
624124IV	WP-1-IV	Wallplate 1 Gang in Ivory		
624124LA	WP-1-LA	Wallplate 1 Gang in Light Almond		
624125WHT	WP-2-WHT	Wallplate 2 Gang in White	2	2
624125IV	WP-2-IV	Wallplate 2 Gang in Ivory		
624125LA	WP-2-LA	Wallplate 2 Gang in Light Almond		
624127WHT	WP-3-WHT	Wallplate 3 Gang in White	3	3
624127IV	WP-3-IV	Wallplate 3 Gang in Ivory		
624127LA	WP-3-LA	Wallplate 3 Gang in Light Almond		
624128WHT	WP-4-WHT	Wallplate 4 Gang in White	4	
624128IV	WP-4-IV	Wallplate 4 Gang in Ivory		
624128LA	WP-4-LA	Wallplate 4 Gang in Light Almond		

The design of the Pico wireless remote control is a trademark of Lutron Electronics Co., Inc., used under license.



Project Name _____ Catalog # _____

1-800-436-7800 (Support, Option 8) www.lsi-airlink.com

04/25/17

© 2017
LSI INDUSTRIES INC.