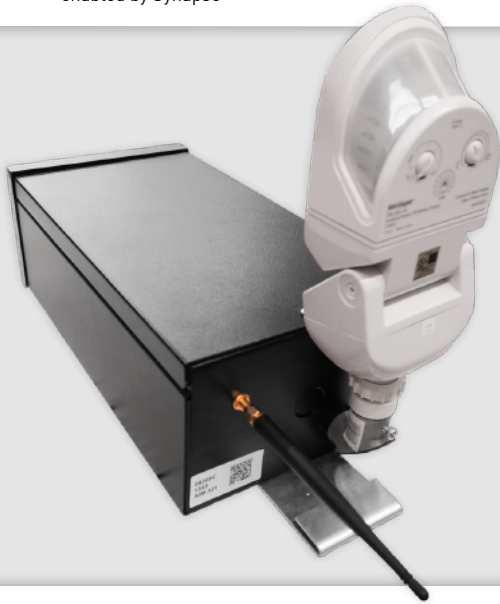


\_\_\_\_\_ Project name  
 \_\_\_\_\_ Prepared by  
 / / Date



## AirLink™ Motion Sensor

enabled by Synapse®



Catalog #: **ALSMS UNV**  
 Part #: **665947**

LSI Controls' AirLink Motion Sensor is one of the components of the AirLink Outdoor Wireless Lighting Control System. It provides the capability to integrate an outdoor motion sensor into the AirLink system. Included is a wireless control module, an outdoor rated enclosure and a motion sensor with a 270° wide viewing angle and 50ft range.

The AirLink Outdoor Wireless Control System is comprised of 1 Site Manager Controller, 1 Override Switch, a Controller for each light fixture, optional Motion Sensors, optional Photo Sensors, optional Zone Controllers and optional Circuit Controllers.

### Applications



Auto dealerships



Warehouses



Shopping centers



Parking facilities

### Features

The AirLink Outdoor Wireless Lighting Control System communicates using a 2.4 GHz mesh radio network employing the standard 802.15.4 protocol. Each unit functions as a repeater extending the wireless mess network. Typical range between wireless devices: 1,000ft line-of-sight.

### Specifications

#### Regulatory Approvals

- FCC, IC, CE certified
- cULus Listed
- California Title 24 compliant

#### Housing

Die-formed steel housing contains factory prewired controller and motion sensor. A terminal block is provided for easy field wiring. Rated for wet locations. Enclosures have a black powder coat finish.

#### Mounting

Mounting bracket is factory installed and can be used with cable straps or mounting holes.

### Power and Performance

- Input power: 120V – 277V (UNV), 50/60Hz
- Operating environment: -40°F to +131°F (-40°C to +55°C), 10-95% RH noncondensing

### Other

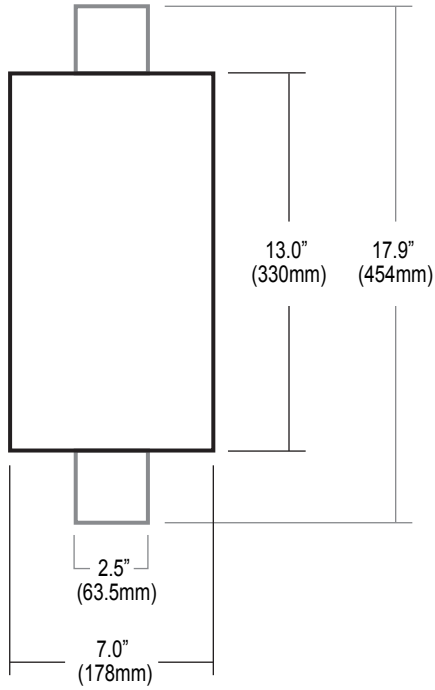
- Shipping weight (in carton): 12lbs / 5.4kg
- Warranty: limited 5-year warranty

### Certifications & Affiliations

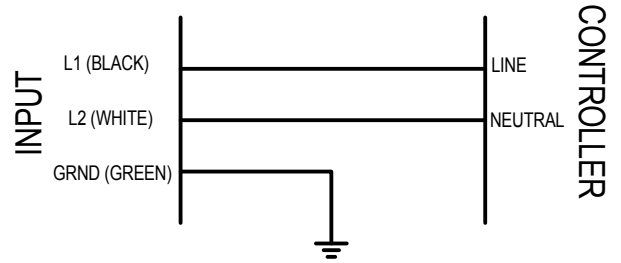




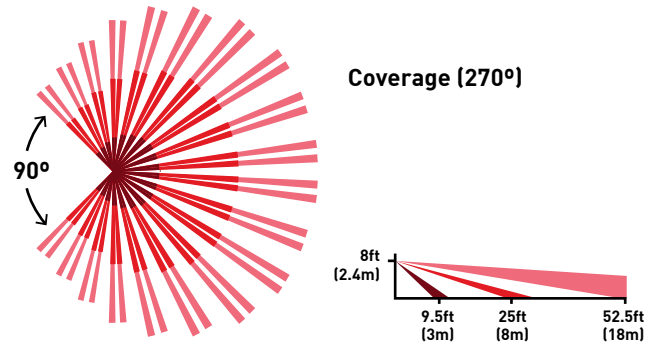
### Dimensions



### Wiring Diagram



### Coverage Diagram



### Ordering Information

Part #	Catalog #	Description
665947	ALSMS UNV	AirLink Synapse – Motion Sensor UNV

### Contact LSI Controls

**Sales**  
controls.sales@lsi-industries.com

**Support**  
controls.support@lsi-industries.com  
1 (800) 436-7800 (support, option 8)

**More information**  
For more information on AirLink, visit our website at [www.lsi-airlink.com/airlink](http://www.lsi-airlink.com/airlink)